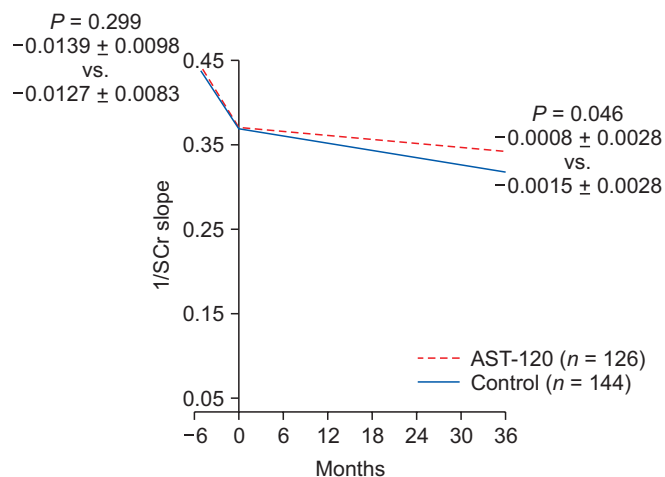


Supplementary table 1. Cox proportional-hazard analysis for composite primary outcome

Variable	Model 1		Model 2		Model 3		Model 4	
	HR	P	HR	P	HR	P	HR	P
Treatment (AST-120)*	1.111	0.460	1.106	0.480	1.098	0.509	1.145	0.342
Age (yr)	0.989	0.037	0.989	0.038	0.985	0.004	0.970	< 0.001
Gender (female) [†]			0.913	0.548	0.907	0.520	0.758	0.072
CKD cause (diabetic nephropathy) [‡]					1.741	<0.001	1.892	< 0.001
CKD stage (4) [§]							3.163	< 0.001

CKD, chronic kidney disease; HR, hazard ratio. Model 1, treatment arm and age; model 2, + gender; model 3, + CKD cause; model 4, + CKD stage. Reference: *control, [†]male, [‡]non-diabetic nephropathy, [§]CKD stage 3.



Supplementary figure 1. The slope of 1/serum creatinine (SCr) over time.